



Data Sync

For SuperOffice CRM

Integration between SuperOffice CRM and ODBC, XML, Mapi and Text based systemes

Data Sync is a tool for the „do-it-yourself“ company who want integration to external data sources. This could be systems where the only integration possibility, is based on export of text files. Data Sync can also be used to integrate the company’s DataWarehouse system with the SuperOffice CRM database.

As communications via e-mail are becoming increasingly automated, Data Sync also supports the ability to receive e-mails from websites and save these, for example, as activities in SuperOffice CRM.

Two-way integration

Data Sync exchanges data both ways and integrates with all parts of SuperOffice CRM:

- Contact + ‘more’ page
- Contact interests
- Project + ‘more’ page
- Project members

- Person + ‘more’ page
- Personal interests
- Activity
- Sales + ‘more’ page
- Relation
- Selection
- Currency
- Extra ‘Tabs’ (require Expander Design Suite)

The installation is carried out in cooperation with your IT supplier. Data Sync will be installed on your server and run as a service, thereby ensuring that your data in SuperOffice CRM and in the external database is always up-to-date. Data Sync is together with ERP Sync the basic module of the integration products from Adwiza.

Brochure sheets are also available for ERP Jump, ERP Filer and Expander Design Suite.

ERP Sync (ES)

Before you invest in Data Sync, check our website to see if we

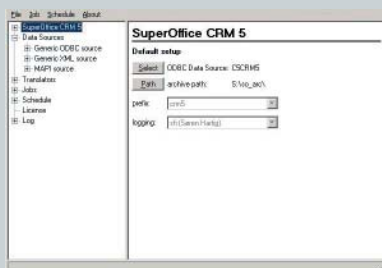
have a connector for your specific ERP system. If your ERP system is supported, the connector will contain the business logic that is required for integration with your specific ERP system. See brochure sheet on ERP Sync.

Technical information

The software has been written directly to the API that you communicate with, to get optimum performance. The program can be controlled by a timer function or data triggers. The Sync processes can be monitored from the outside via a COM interface, via a timer function or via event triggers.

System requirements

SuperOffice CRM version 5.0.30.0 or higher, and run on an SQL database, either MS-SQL, Oracle or Sybase.



With Data Sync from Adwiza, it is easy to configure how the desired data should be transferred to SuperOffice CRM.

SuperOffice Solution Provider

SuperOffice assumes no responsibility for products developed by third party, used together with or in connection with SuperOffice CRM 5 software. The solution provider shall identify and hold SuperOffice harmless from third party claims, from the use of SuperOffice products under these terms. SuperOffice warrants the SuperOffice CRM 5 product according to the end user license agreement, only when no changes have been made to the product.

