

SuperSearch

For SuperOffice CRM 5



SuperSearch makes it easy to perform advanced searches in SuperOffice CRM 5.

SuperSearch enables you to perform quick and simple searches as well as advanced searches in SuperOffice CRM 5. Subsequently you can analyse and process the result of your search, e.g. by placing it in a Selection or exporting it to *Microsoft Excell*.

Search and you will find

SuperSearch enables you to perform searches in the following areas of SuperOffice CRM 5:

- Company
- Contact person
- Project + Project Members
- Sales
- Appointment / Task
- Document
- ProductPage More Tabs

You can also combine the search areas and even use negative search criteria. You will thus obtain very precise search results.

In the above example a search is performed for all the companies in Denmark which were visited last year but which have not been visited this year.

Save the search criteria

You can save your search criteria, which will spare you a lot of effort in connection with your next search.

The SuperOffice Administrator can create and save general searches, and each individual SuperOffice User can then create and save his own searches.

The result

The result of a search can be a list of Companies, Projects, Activities, Sales, Documents or Persons which can be processed in different

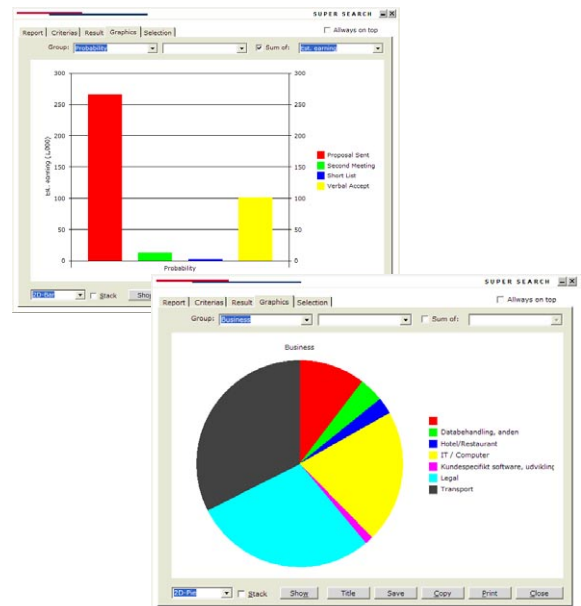
ways. For instance you can transfer the result list to a Microsoft Excell worksheet. SuperSearch can also display graphs based on the result list.

Company name	Salesman	Title	Date	Status	Probability	Est. earning	Earning	Steps	Open
Hans Aage Pedersen	Andreas Jesi		4/14/2004	Open	Proposal Sent	300	1000	2	209
Byggnads AB Libel	Lasse Jensen	Offer 1234	11/9/2004	Open	Proposal Sent	126	420	6	194
LEGO System A/S	Lasse Jensen	Offer 5514-v	3/15/2004	Open	Proposal Sent	1062	3542	6	194
VVS-Bendixen ApS	Lasse Jensen	Offer 1244-I	3/15/2004	Open	Proposal Sent	2448	8160	5	194
LEGO System A/S	Lasse Jensen	Offer 3344	3/10/2004	Open	Proposal Sent	300	1000	5	127
SAS Institute A/S	Andreas Jesi	SuperCheck 8/26/2004		Open	Proposal Sent	30	100	3	75
Torkild Bjerg	Andreas Jesi	12.345.678	1/1/2004	Open	Proposal Sent	23811	79371	1	70
Torsten Ove Larsen	Andreas Jesi	12.345.678	1/1/2004	Open	Proposal Sent	23811	79371	1	70
SAS Institute A/S	Andreas Jesi	12.345.678	1/1/2004	Open	Proposal Sent	23811	79371	2	67
Select Denmark	Lasse Jensen	Offer 1125	3/15/2004	Open	Second Meetin	12361	24722	6	194
A/S Dansk Shell	Lasse Jensen	Offer 9902	3/15/2004	Open	Second Meetin	500	1000	5	127
BitWeb	Lasse Jensen	Offer 1124	3/15/2004	Open	Second Meetin	500	1000	6	127
Scandic Food A/S	Lasse Jensen	Offer 1314-A	3/15/2004	Open	Short List	800	1000	5	127
Byggnads AB Libel	Lasse Jensen	Offer 5678	3/15/2004	Open	Short List	800	1000	4	127
Scandic Food A/S	Lasse Jensen	Offer 1314-I	3/15/2004	Open	Short List	800	1000	6	127
Scandic Food A/S	Lasse Jensen	Offer 9901	3/15/2004	Open	Short List	800	1000	5	127
LEGO System A/S	Lasse Jensen	Offer 3356	3/10/2004	Open	Verbal Accept	900	1000	5	127

List of search result

If the result of the search is a list of companies, it is also possible to transfer some or all the companies to an existing or a new Selection in SuperOffice CRM 5.

In the selection in question you can then use the usual Tasks for the members of the Selection.



SuperSearch can display different types of graphs based on the search result.

Siteshop ApS
Tuborg Boulevard 15 - 2. th.
DK-2900 Hellerup
Phone +45 70 20 19 78
Fax +45 39 40 47 51
Web www.siteshop.dk
e-mail info@siteshop.dk

SuperOffice Solution Provider

SuperOffice assumes no responsibility for products developed by third party products used together with or in connection with SuperOffice software. The solution provider shall defend, indemnify and hold SuperOffice harmless from any third party claims, from the use of the SuperOffice Products under these terms. SuperOffice warrants the SuperOffice product according to its end user license agreement only when no changes have been made to the product.

SuperSearch

Technical Specifications

Information

SuperSearch is 100% compatible with SuperManager ProductPage, which means that you can combine searches for Company data, Contact Person data, etc. with searches for order lines, invoice data, pipelines, etc. from ProductPage.

SuperSearch is also 100% compatible with SuperSentry Basic and Advanced. Thus SuperSearch enables you to make a report on the companies, persons, activities, etc. which have been made confidential, always provided that you have the right to do so.

SuperSearch enables you to do the following:

- Searches based on company data combined with other data in SuperOffice, e.g. relations, interest codes, project relations, etc.
- Advanced sales reports including sales following-up and sales forecast
- Analyse the sales process, e.g. number of sales steps or number of days where sales are open
- Search for documents in SuperOffice
- Project reports where you can search for all fields (including the More Tab) and search for companies attached to the project in question
- Address searches
- Search for companies, projects or documents made confidential by means of SuperSentry
- Analyse sales history based on data from ProductPage
- Search for contact persons or project participants

Download

SuperSearch is easily downloaded from www.siteshop.dk. A very simple installation wizard is also available.

System requirements

- SuperOffice CRM 5 ver. 5.6+

Bestil SuperSearch

- Order and download from www.siteshop.dk
- Contact your SuperOffice dealer or
- phone Siteshop (+45) 70 20 19 78

Note: Demo mode

You can download, install and use SuperSearch for 1 month, free of charge. If you do not order and pay for a key, the program will stop functioning after 1 month.

Siteshop ApS

Tuborg Boulevard 15 - 2. th.
2900 Hellerup
Tlf.: (+45) 70 20 19 78
Denmark
www.siteshop.dk



Siteshop ApS

Tuborg Boulevard 15 - 2.TH.
2900 Hellerup
Denmark
Phone: (+45) 70 20 19 78
Fax: (+45) 39 40 47 51
Web www.siteshop.dk
e-mail info@siteshop.dk